

MRI Catalogue



MRI Equipment: Price List and References

*
Customs and transport costs are not included in the prices



+91 72042 86493

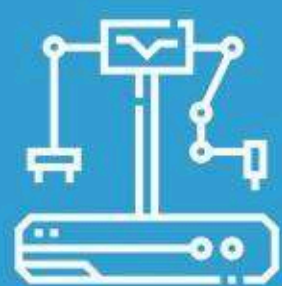


contact@surgicalskart.com

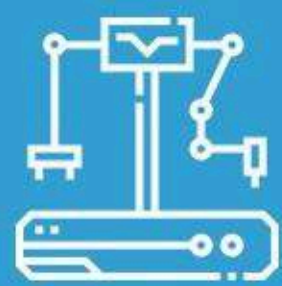


www.Surgicalskart.com





<div>Brand and Model</div> <div>Type</div> <div>Key Features</div> <div>advantage</div> <div>Main applications</div> <div>Price</div>					
	Siemens Axiom Artis	Toshiba Infinix	Philips FD10	Philips FD15	Philips FD20
	Angiography	Angiography	Angiography	Angiography	Angiography
	Versatile, high image quality, interventional capabilities	High flexibility, smooth rotation for optimal access	Compact, high image precision for targeted diagnostics	Versatile system with improved resolution	Wide field of view, excellent resolution
	Ideal for vascular and cardiac procedures	Modern system with recent tube	Ideal for small establishments	High quality image	Ideal for complex cases
	Vascular procedures, cardiac and neuro interventions.	Vascular interventions, oncology, and cardiac procedures.	Cardiac procedures, targeted diagnostics	Vascular imaging, neuro and cardiac interventions	Complex imaging, oncology, and advanced interventions
	\$ 133 232	\$ 122 012	\$ 182 317	\$ 196 341	\$ 277 683



Brand and Model

Type

Key Features

advantage

Main applications

Price



GE Innova IGS 320

Angiography

High image resolution, suitable for 3D examinations

Excellent compatibility with modern software

Neuro interventions, cardiovascular imaging, oncology

\$ 392 683



GE Innova IGS 330

Angiography

Expanded field, precision for complex diagnostics

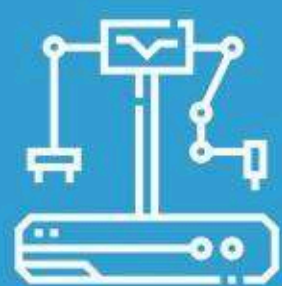
Optimized for high capacity hospitals

Vascular interventions, oncology, and cardiac procedures.

\$ 546 951



**LABORATORY
of Cateology**



Brand and Model

Philips Ingenuity TF 64

Anneau Siemens Biograph Horizon 4

Siemens Biograph mCT 40

Siemens Biograph mCT 64

Biograph TEP-CT Siemens 6

Type

64 slices (PET-CT)

4 rings

40 slices, 4 rings

64 slices

6 slices

Key Features

Hybrid PET-CT technology for precise diagnoses

High-performance hybrid imaging, low radiation dose

High precision for complex diagnostics

Advanced PET-CT technology, exceptional resolution

Compact, ideal for routine diagnostics

advantage

High precision for advanced diagnostics

Versatility for various applications

Reliability for complex cases

Advanced diagnosis with high accuracy

Low cost, suitable for regular needs

Main applications

Oncology, molecular imaging, cardiology

Molecular imaging, oncology, cardiopulmonary examinations

Oncology, neurology, complex examinations

Oncology, neurology, molecular imaging, cardiac examinations

Regular diagnostics, oncology

Price

\$ 483 841

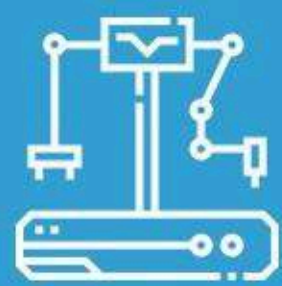
\$ 1 016 768

\$ 792 378

\$ 932 622

\$ 203 354

TEP-CT SCAN



Brand and Model

Type

Key Features

advantage

Main applications

Price



**GE Discovery 16
Tranches STE PET CT**

16 slices
(PET-CT)

High quality PET-CT,
excellent resolution

Reliable technology for
accurate diagnostics

Oncology, molecular
imaging, neurology

\$ 497 866



**Caméra Gamma
GE Infinia SPECT**

SPECT

Molecular imaging,
ideal for specific
examinations

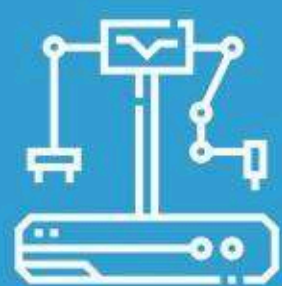
Dedicated solution for
SPECT applications

Specialized molecular
imaging, specific
diagnosis

\$ 124 116



TEP-CT SCAN



Brand and Model

Siemens Avanto 1.5T

Siemens Magnetom Aera 1.5T

Siemens Essenza 1.5T

Philips Ingenia 1.5T (DO BIG BORE)

Philips Achieva 1.5T

Type

1.5T

1.5T

1.5T

1.5T

1.5T

Key Features

Closed, 8 channels

Closed, 18 channels, open design

Closed

Closed, Large bore

Closed

advantage

Good image quality, fast, reliable

Patient comfort (open configuration), fast

Good value for money, easy to use

Excellent image quality, greater comfort for patients

Good performance in brain and musculoskeletal imaging

Main applications

General imaging, neurology, musculoskeletal

Cardiovascular imaging, neurology, musculoskeletal

General imaging, small hospitals or clinics

Neurology, cardiology, musculoskeletal, abdominal

Neurology, musculoskeletal, cardiovascular

Price

\$ 343 598

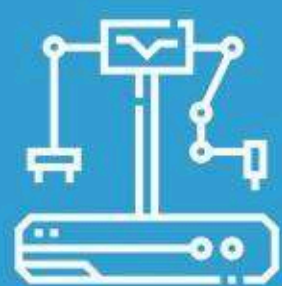
\$ 546 951

\$ 596 037

\$ 483 841

\$ 918 598

MRI Comparison



Brand and Model

Hitachi Aperto Eterna 0.4T

Hitachi Airis Vento 0.3T

Hitachi Airis Vento LT 0.3T

Hitachi Airis II 0.3T

Hitachi Airis Mate

Type

0.4T

0.3T

0.3T

0.3T

0.3T

Key Features

Open design, closed extremities

Open design

Open design

Open design

Open design

advantage

Patient comfort, smaller size

Maximum comfort, ideal for claustrophobic patients

Compact, comfortable for patients

Patient comfort, installation in small spaces

Patient comfort, installation in small spaces

Main applications

General imaging, patients with implants

General imaging, pediatric, overweight patients

General imaging, pediatrics, emergencies

General imaging, routine scan

General imaging, pediatric, emergency situations

Price

\$ 207 561

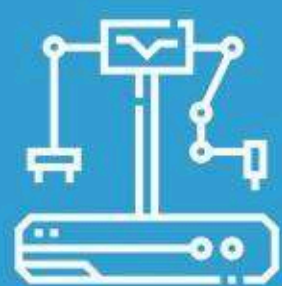
\$ 273 476

\$ 189 329

\$ 175 305

\$ 138 841

MRI Comparison



Brand and Model

Esaote S Scan

Esaote C-Scan 0.2T

Siemens Concerto 0.2T

Hitachi Ouvert Lucent 0.4T

Siemens Verio 3.0T

Type

--

0.2T

0.2T

0.4T

3.0T

Key Features

Closed

Open design

Closed

Open design

Closed, 32 channel

advantage

High precision,
economical

Very compact,
accessible, easy to use

Convenient for basic
clinical use

Patient, fast comfort

Patient, fast comfort

Main applications

Neurology,
musculoskeletal, small
clinics

Pediatric imaging,
emergency, basic
exams

General imaging,
community clinics

General imaging,
pediatric, basic
examination

Neurological,
cardiovascular,
musculoskeletal
imaging

Price

\$ 175 305

\$ 91 159

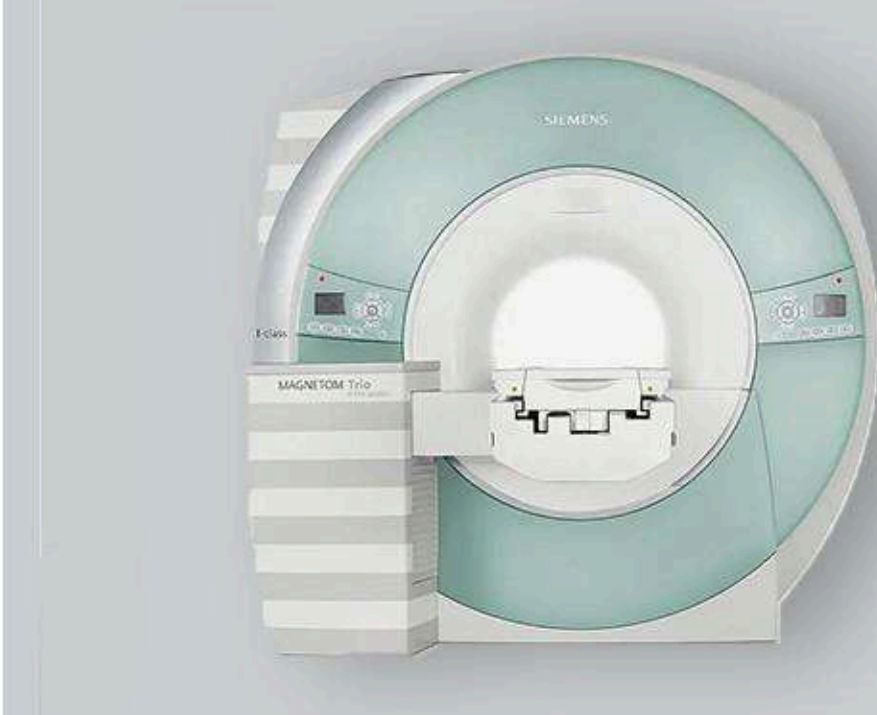
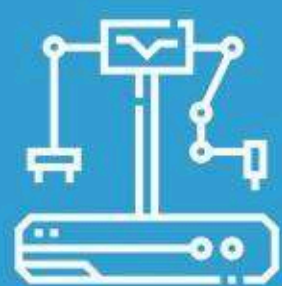
\$ 161 280

\$ 511 890

\$ 960 671

MRI Comparison





Brand and Model

GE Discovery 750HD 3.0T

Philips Ingenia Elite 3.0T

Siemens Sempra 1.5T

Siemens Trio Tim 3.0T 32 ch

GE Excite 1.5T

Type

3.0T

3.0T

1.5T

3.0T

1.5T

Key Features

Closed, 8-32 channel

Closed, 32 channel

Closed

Closed, 32 channel

Closed

advantage

High image quality, speed, advanced technology

Excellent resolution, ease of use

Good value for money, ideal for clinics and hospitals

High image quality, wide field of application

Good compromise between cost and performance

Main applications

Neurology, cardiovascular, oncology

Neurological, cardiac, musculoskeletal imaging

General imaging, musculoskeletal, neurology

Cardiac, neurological, musculoskeletal imaging

General imaging, neurology, musculoskeletal

Price

\$827 439

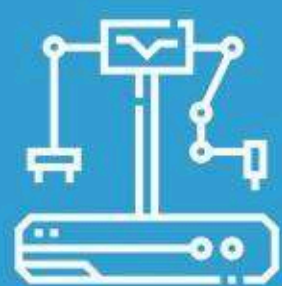
\$ 1 100 915

\$ 617 073

\$ 596 037

\$ 343 598

MRI Comparison



Brand and Model

Siemens Prism Fit 3.0T

Philips Achieva 3.0T

GE Explorer 1.5T

Siemens Esprée 1.5T

GE Signa HDx 1.5T

Siemens Spectra 3.0T

Type

3.0T

3.0T

1.5T

1.5T

1.5T

3.0T

Key Features

Closed

Closed,
32 channel

Closed

Closed

Closed

Closed,
32 channel

advantage

Very high resolution, precise image, speed

Very high image quality, wide range of applications

Good value for money, easy to use

Compact, fast, low power consumption

Solid performance, good value for money

High resolution, high performance in complex imaging

Main applications

Imagerie neurologique, cardiovasculaire, musculo-squelettique

Imagerie neurologique, cardiaque, oncologique

Imagerie générale, neurologie, musculo-squelettique

Imagerie générale, petits hôpitaux

Imagerie générale, musculo-squelettique, neurologie

Neurologie, musculo-squelettique, cardiaque, oncologie

Price

\$ 666 159

\$ 525 915

\$ 652 134

\$ 399 695

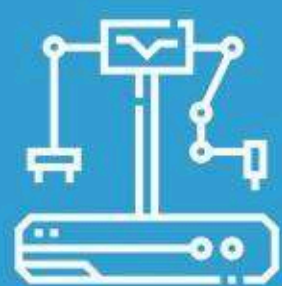
\$ 402 500

\$ 1 072 866

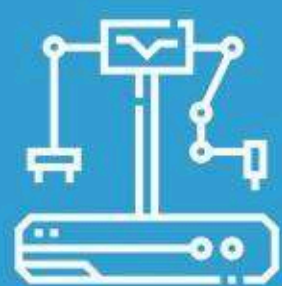
MRI Comparison

SK

SURGICALSKART

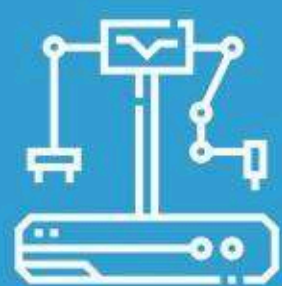


    					
Brand and Model	GE VCT 64	GE Brightspeed 16	GE Revolution 16	GE Optima 660 (128 tranches)	Toshiba Aquilion 64
Type	64 slices	16 slices	16 slices	128 slices	64 slices
Key Features	Advanced imaging, high processing speed	Economical, compact solution	High resolution, low dose	Recent tube, excellent image quality	Polyvalence et performance pour des diagnostics précis
advantage	Good performance in cardiology	Suitable for regular exams	Modern and reliable design	High resolution and efficiency	Known for its durability
Main applications	General imaging, cardiology, oncology	General imaging, regular diagnostics	Cardiology, routine diagnostics	Oncology, neurology, complex imaging	Cardiology, oncology, general imaging
Price	\$ 161 280	\$ 119 207	\$ 133 232	\$ 294 512	\$ 154 268



					
Brand and Model	Toshiba Activation 16	Toshiba Alexion 16	Toshiba Aquilion Premier	Hitachi Supria 16	Philips Ingenuity Core 128
Type	16 slices	16 slices	Advanced multi-slices	16 slices	128 slices
Key Features	Compact, economical solution	Compact, easy to install	Superior resolution, exceptional speed	Compact, low dose	Advanced technology, high precision
advantage	Low cost for regular diagnostics	Reliable solution for diagnostic centers	High performance	Ideal for small spaces	Very high image quality
Main applications	Routine diagnostics, general imaging	Regular diagnostics	Complex imaging, oncology, neurology	General imaging, routine diagnostics	Oncology, neurology, advanced diagnostics
Price	\$ 119 207	\$ 119 207	\$ 231 402	\$ 140 244	\$ 274 878

CT SCAN



Brand and Model

Philips Ingenuity Core 64

Siemens Definition AS 128

Siemens Sensation 64

GE Discovery 750 HD 128

Siemens Definition AS 128 Slice

Type

64 slices

128 slices

64 slices

128 slices

128 slices

Key Features

Optimal performance for various diagnostics

Low dose, rapid imaging

Fast and accurate diagnosis

Recent tube (2022), high resolution

Recent tube (2022), low dose

advantage

Sustainable solution

High resolution

High performance

Reliability and precision

Versatility and high performance

Main applications

Regular and advanced diagnostics

Cardiology, oncology, complex imaging

Oncology, neurology, cardiology

Cardiology, oncology, neurology

Advanced diagnostics

Price

\$ 203 354

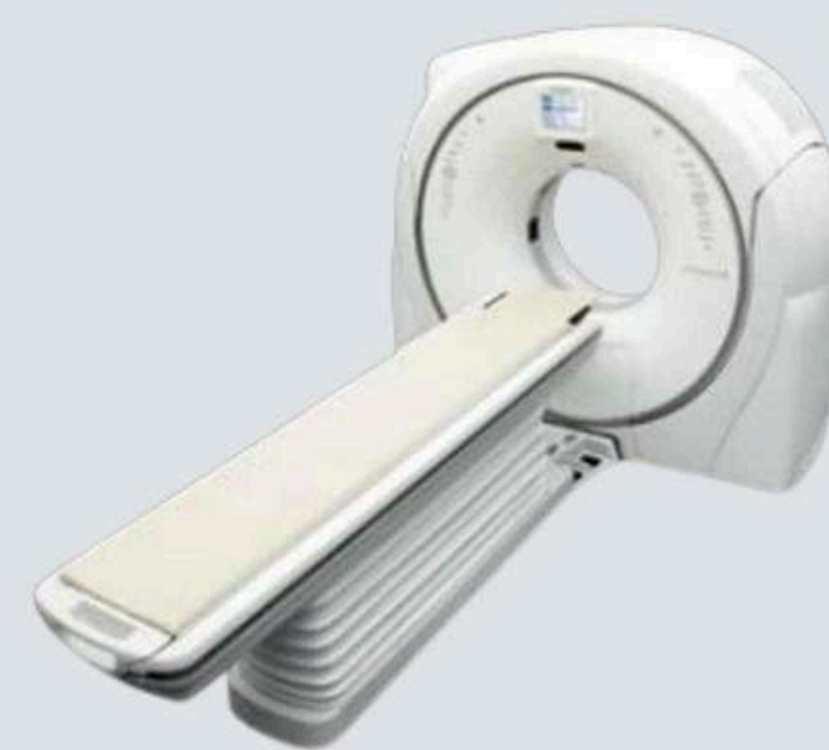
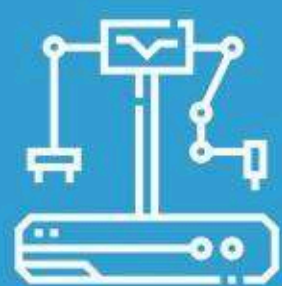
\$ 217 378

\$ 105 183

\$ 273 476

\$ 266 463

CT SCAN



Brand and Model

Philips Brilliance 64 Tranches

Siemens Emotion 16

Hitachi Scenaria 128

Type

64 slices

16 slices

128 slices

Key Features

Recent tube (2023), efficient solution

Recent tube (2018), compact solution

High resolution, advanced solution

advantage

Reliable diagnosis

Low cost, compact

Reliable for complex diagnostics

Main applications

Oncology, neurology, regular diagnostics

Simple diagnostics, general imaging

Cardiology, neurology, oncology

Price

\$ 203 354

\$ 109 390

\$ 189 329



CT SCAN