



**SURGICALS***Kart*  
Your **One-Stop** Shop for **Surgical Supplies**

# **RADIOGRAPHY**

## **AND IMAGING EQUIPMENT**

[www.Surgicalskart.com](http://www.Surgicalskart.com)



# FIXED DR SYSTEM



## BPL H-RAD 32 / 40 / 50\*

Product

Benefits

- High quality imaging with tailored power options (32, 40\*, 50\*\*)
- Low dose of radiation
- Intuitive user interface

Areas of  
application

- General hospitals
- Radiological clinics
- Thoracic and orthopedic examination

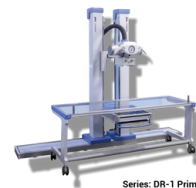
Features

- Available in three powers (32, 40\*, 50\*\*)
- Suitable for installations requiring high power flexibility

Size (in cm)

**180 (H) x 85 (W) x 80 (D)**

Standard size suitable for hospitals and clinics with moderate to large spaces.



## BPL H-RAD 40 / 50\*

- Optimal performance for high workload environments
- Fast digital imaging
- Robust and durable construction

- Large capacity hospitals
- Emergency services
- Specialized radiography

- Higher power options (40\* and 50\*\*)
- Suitable for complex examinations
- Ideal for large healthcare structures

**190 (H) x 90 (W) x 85 (D)**

Slightly larger model to meet specialized needs in high-demand environments.



## BPL H-RAD 32/32i

- Cost-effective solution with reliable performance
- Compact design for space saving
- Compatible with basic configurations

- Local clinics
- Mobile installations
- General X-ray

- "32i" version optimized for mobile needs or compact installations
- Ideal for small clinics or mobile establishments

**160 (H) x 75 (W) x 70 (D)**

More compact size, ideal for small clinics or tight spaces.



# DR MOBILE SYSTEM



## BPL M-RAD 5.0 DR

### Product

### Benefits

- High resolution digital imaging
- High output power
- Suitable for high workload environments

### Areas of application

- Large capacity hospitals
- Emergency services
- Advanced radiology

### Features

- High power for complex examinations
- Ideal for hospitals treating a high volume of patients

### Size (in cm)

200 (H) x 95 (W) x 90 (D)



## BPL M-Rad 3.5 DR

- Versatile solution
- Effective for standard exams
- Compact design

- General clinics
- Thoracic and orthopedic imaging

- Average power for a wide range of applications
- Ideal for medium-sized establishments

180 (H) x 85 (W) x 80 (D)



## BPL MRAD 3.6 PLUS DR

- Compact and lightweight design
- Economical solution
- Optimized for low dose

- Local clinics
- Mobile environments
- General radiology

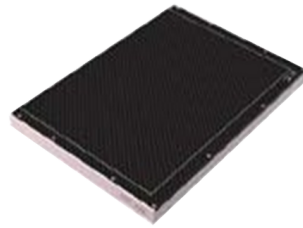
- Compact and portable
- Suitable for environments requiring mobility or restricted spaces

170 (H) x 75 (W) x 70 (D)



# RETROFIT SOLUTION

Product



## Mammography RSM 2430C

Benefits

Ideal for precise screening of breast pathologies in specialized clinics or hospitals.

Areas of  
application

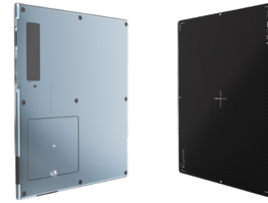
- Breast cancer screening and diagnosis
- Specialized clinics in women's health

Features

- Optimized for breast exams
- Compact design for specific installations

Size (in cm)

24 (H) x 30 (W)



## EVS 3643 WP

- Versatile and durable
- Fast digital imaging
- Resistance to water and demanding environments

- General applications in radiology
- Hospitals and emergency centers

- Waterproof (WP: Waterproof)
- Size suitable for multiple applications

36 (H) x 43 (W)



## EVS 4343 WP

- Large format imaging
- Ideal for advanced applications
- High durability and waterproof design

- Advanced radiology in hospitals
- Specialized imaging centers

- Large sensor (43 x 43 cm) for more detailed examinations
- Waterproof for harsh environments

43 (H) x 43 (W)



Upgrade your conventional X-ray system to digital radiography with the EVS Retrofit Series of flat panel detectors, a wireless system that ensures optimum performance and efficient workflow. It maintains sensitivity, image quality and versatility, while offering easy upgrade options. The EVS 3643WP and EVS 4343WP are 14 x 17-inch and 17 x 17-inch portable wireless flat panel detectors, respectively, that are lightweight and designed to deliver sharp, fast, high-quality images.

# ULTRASOUND SYSTEMS

## Product

## Zoncare Q3

## Benefits

Affordable price, intuitive interface

## Portability

Portable

## Areas of application

General practitioner,  
obstetrics

## Features

2D/3D, convex and linear probe



- Supports 2D, CFM, M, PW, CW, CMM, DPDI, AMM, 3D/4D, ZPage, ZLive, TDI, Elastic Imaging and Panoramic Imaging modes.
- Advanced features like THI, SRI, SCI, TSI, FCI, EFOV, HR flow and B-steer.
- Standard automatic measurement of IMT (intima-media thickness).
- Support for local and global amplification.
- Support for automatic detection and calculation of PW (Pulsed Wave) traces.
- Pre-installed USB ports, support multiple data transmission.
- Dual Live and multi-synchronization technologies.
- "One-Key Q Save" quick save function allows saving/presetting with just one key.
- Four user-defined buttons.
- Biopsy function.
- 2 hours of autonomy thanks to the integrated battery.
- Warranty: 2 years.



# ULTRASOUND SYSTEMS

Product	<b>Zoncare Q7</b>
Benefits	High image quality, 4D support
Portability	Portable
Areas of application	Cardio, abdomen
Features	2D/3D/4D, high resolution, ergonomic



- 19-inch high-resolution LED medical monitor for optimal viewing.
- 10.4 inch LED touch screen with exceptional sensitivity.
- Four transducer connectors activated.
- Built-in standard gel heater.
- Automatic measurement of carotid IMT.
- Independent linear deflection imaging.
- Optional puncture guidance technology.
- Optional 3D/4D imaging.
- Pre-installed USB port and hidden retractable keyboard.
- DICOM 3.0 compatibility.
- Support multiple data transmission interface.
- Optional built-in lithium battery.
- 2 hours of autonomy thanks to the integrated battery.
- Warranty: 2 years.



# ULTRASOUND SYSTEMS

Product	<b>Zoncare M5</b>
Benefits	Lightweight, easy to carry
Portability	Portable
Areas of application	Mobile imaging
Features	2D/3D, compact screen, low consumption
Size (in cm)	<b>36 x 28 x 9</b>



- 12 inch high resolution medical LCD monitor.
- Two transducer connectors activated.
- Automatic measurement of carotid IMT.
- Energy Doppler Imaging (PDI).
- Directional Energy Doppler Imaging (DPDI).
- Continuous wave (CW) Doppler.
- High Pulse Repetition Frequency (HPRF).
- Qsave function (parameter presetting).
- DICOM 3.0 compatibility.
- Multiple data transmission.
- Optional USB pedal.
- Optional built-in battery.
- Optional custom trolley and suitcase.
- Available transducers: Convex, Linear, Transvaginal, Phased Array, Micro-Convex.
- Warranty: 2 years.



# ULTRASOUND SYSTEMS

Product	<b>Zoncare M30</b>
Benefits	Stable performance, smooth interface
Portability	Stationary
Areas of application	Cardio, general practitioner
Features	High resolution, multi-probe
Size (in cm)	50 x 40 x 20

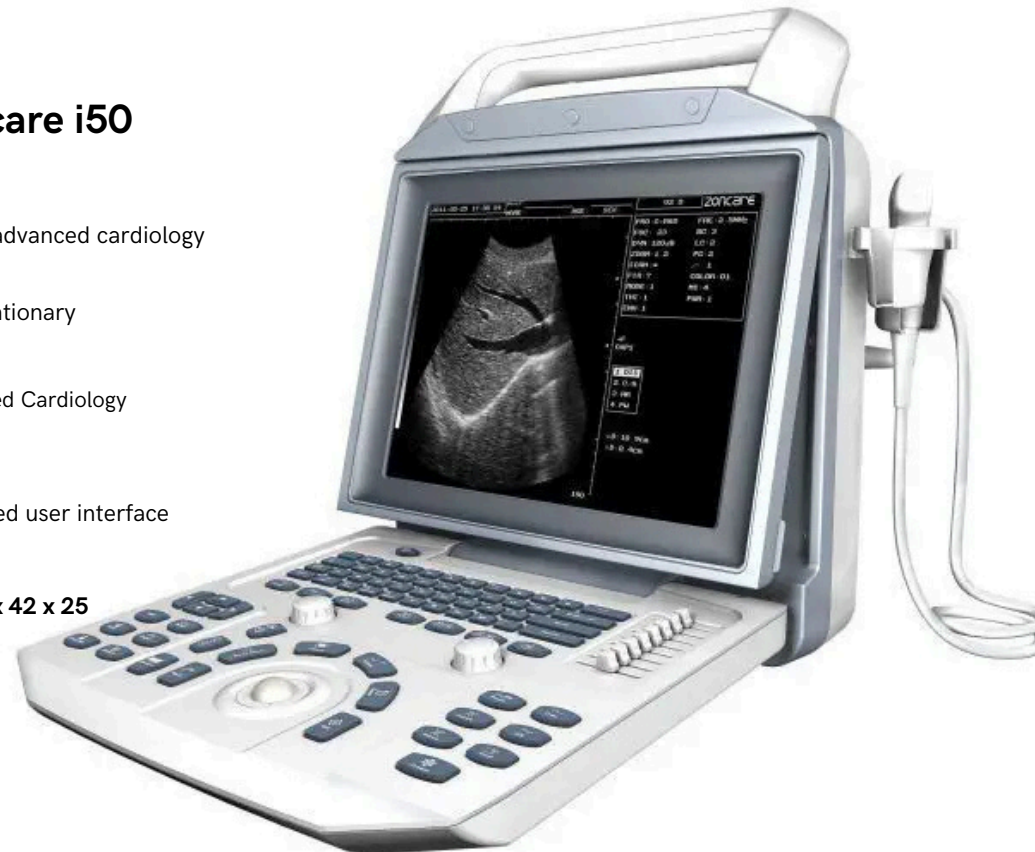


- Comprehensive clinical applications: A wide range of medical uses.
- Advanced Imaging Features: B Steer, 3D/4D, ZPage, ZLive, PW, CW, AMM, CMM, TDI, TVI, PDI, DPDI (these terms require more contextual explanation for accurate translation).
- Panoramic and elastic imaging: Allowing for more detailed and flexible visualization.
- Biopsy function: Used to take tissue samples.
- Customization: Ability to create custom presets (QSave) and assign functions to different keys.
- Connectivity: ECG ports, USB 3.0, built-in DVD player.
- DICOM 3.0 Compliance: Ensures compatibility with other medical imaging systems.
- Multiple Data Transmission: Flexibility in sharing images.
- Foot pedal: For convenient control.
- Built-in battery: For mobile use.
- Various transducers: Convex, linear, transvaginal, phased array, micro-convex, 4D volume, suitable for different types of examinations.
- Warranty: 2 years.



# ULTRASOUND SYSTEMS

Product	<b>Zoncare i50</b>
Benefits	Optimized for advanced cardiology
Portability	Stationary
Areas of application	Advanced Cardiology
Features	4D, improved user interface
Size (in cm)	55 x 42 x 25



- 12-inch high-resolution medical LCD display: Provides clear and detailed image for accurate diagnosis.
- Dual Transducer Connectors: Allows different types of probes to be used simultaneously or alternately for a variety of examinations.
- Auto-Freeze Feature: Instantly captures the desired image for further analysis.
- Automatic Report in BMP Format: Generates ready-to-use examination reports, facilitating documentation and sharing of results.
- Full Screen Imaging (FSI): Optimizes image viewing for better interpretation.
- Q-Guide: Makes it easier to complete exams, even for less experienced users.
- One-click data storage: Quick and easy archiving of images and reports.
- Multiple data transmission: Allows data to be shared with other information systems or exported to different media.
- USB Foot Control (optional): Frees the operator's hands for greater comfort and precision.
- Built-in battery (optional)
- Custom trolley and case (optional): Makes it easier to transport and store the device.
- Various transducers: Convex, linear, transvaginal, micro-convex, suitable for a wide range of clinical applications.
- 2 year warranty

# ULTRASOUND SYSTEMS

Product	<b>Zoncare VIV20</b>
Benefits	Portable and economical
Portability	Portable
Areas of application	Multi-purpose use
Features	3D, compact design, versatility
Size (in cm)	<b>38 x 30 x 12</b>



- **Wide Clinical Applications:** The device can be used for a wide range of medical examinations, making it a versatile tool.
- **Advanced Imaging Modes:** The presence of numerous imaging modes (B Steer, 3D/4D, etc.) suggests high accuracy and ability to visualize anatomical structures from different angles.
- **Personalization:** The ability to create presets and program keys allows the device to be adapted to the specific needs of each user.
- **Connectivity:** ECG, USB ports and built-in DVD player make it easy to integrate the device into a clinical environment and share data.
- **DICOM Compliance:** This standard ensures compatibility with other medical imaging systems.
- **Mobility:** The built-in battery and carrying options (chassis, suitcase) make the device transportable.
- **Components and accessories:**
- **Multiple transducers:** The choice of different transducers allows the device to be adapted to different types of examinations and patients.
- **Foot pedal:** Facilitates the handling of the device during the examination.



# ULTRASOUND SYSTEMS

Product	<b>Zoncare VIV40</b>
Benefits	Advanced imaging, extensive applications
Portability	Stationary
Areas of application	Cardio, obstetrics
Features	4D, high resolution, robustness
Size (in cm)	<b>52 x 40 x 22</b>



- Comprehensive clinical applications
- Imaging modes: B Steer, 3D/4D, Zpage, Zlive, PW, CW, AMM, CMM, TDI, TVI, PDI, DPDI
- Panoramic imaging, elastic, EFOV, biopsy function
- Custom Presets (Qsave)
- Multiple programmable keys
- ECG port, USB 3.0, built-in DVD player
- DICOM 3.0 compatible
- Multiple data transmission
- USB foot control (optional)
- Built-in battery
- Transducers: convex, linear, transvaginal, phased array, micro-convex, 4D volume
- 2 year warranty



# ULTRASOUND SYSTEMS

Product	<b>Zoncare VIV60</b>
Benefits	Accurate diagnosis, modern technology
Portability	Stationary
Areas of application	Advanced diagnosis
Features	Ultra-high resolution, multi-probe
Size (in cm)	<b>56 x 44 x 24</b>



- Comprehensive clinical applications
- Imaging modes: B Steer, 3D/4D, Zpage, Zlive, PW, CW, AMM, CMM, TDI, TVI, PDI, DPDI
- Panoramic imaging, elastic, EFOV, biopsy function
- Custom Presets (Qsave)
- Ten programmable keys
- ECG port, USB 3.0, built-in DVD player
- DICOM 3.0 compatible
- Multiple data transmission, SSD+HDD
- USB foot control (optional)
- Built-in battery
- Transducers: convex, linear, transvaginal, phased array, micro-convex, 4D volume
- 2 year warranty



# ULTRASOUND SYSTEMS

Product	<b>Zoncare VIV80</b>
Benefits	Full features, premium
Portability	Stationary
Areas of application	Complete diagnosis
Features	4D, advanced imaging technology
Size (in cm)	<b>60 x 45 x 26</b>



- Comprehensive clinical applications
- Imaging modes: B Steer, 3D/4D, Zpage, Zlive, PW, CW, AMM, CMM, TDI, TVI, PDI, DPDI
- Panoramic imaging, elastic, EFOV, biopsy function
- Custom Presets (QSave)
- Ten programmable keys
- ECG port, USB 3.0, built-in DVD player
- DICOM 3.0 compatible
- Multiple data transmission, SSD+HDD
- USB foot control
- Built-in battery
- Transducers: convex, linear, transvaginal, phased array, micro-convex, 4D volume
- 2 year warranty



# RADIOGRAPHY AND IMAGING

## Vita Flex CR System



- Compact, flexible and affordable digital radiography
- Vita Flex system designed for small to medium hospitals, clinics and practices requiring compact and cost-effective digital solutions
- Small size and light weight
- Multiple flow rates to choose from (30/45/60 frames per hour)
- Possibility of horizontal or vertical positioning
- Options including a dental panoramic kit for dental imaging and a long-range imaging system for high-quality long bone capture
- Easy upgrade from film to digital
- Comes with high-quality digital images to speed up workflow and improve patient care
- Offers a range of flow rates to meet your needs
- Position the Vita Flex horizontally or vertically depending on your space
- If the Vita Flex needs repair, you can usually do it yourself with field replaceable units - no tools or technical skills required
- Powerful Image Suite Software
- Image Suite is powered by Eclipse to deliver high quality images. This robust software interface is easy to use and touch-sensitive, tailor-made for veterinary use
- Our advanced "mini-PACS" module offers a complete solution for scheduling, image capture, playback, reporting and archiving
- Vita Flex CR System available to veterinarians
- Warranty - 1 year



# RADIOGRAPHY AND IMAGING



[www.Surgicalskart.com](http://www.Surgicalskart.com)



## PRUDENT E1717 DR SYSTEM

- The DRYVIEW 5700 laser imaging system offers simplicity and accessibility for healthcare facilities of all sizes.
- Affordable, compact, reliable. Low acquisition and operating costs fit any budget.
- Small footprint. Its small size allows installation in any workspace.
- Minimal maintenance. No daily or weekly preventative maintenance is required on the print heads or film transport rollers to optimize image quality.
- Simplified operation. Film loading in ambient light and easy film loading make operation even easier.
- Laser Technology. Every image, on every film size, is printed using true laser technology. CR, DR, CT and MRI compatible.
- DRYVIEW Laser Imaging Film. Delivers the simplicity and performance needed to improve productivity.
- Image quality. 325 pixels per inch; 78 micron laser dot spacing.
- DRYVIEW DVB+ Laser Imaging Film. 7 mil blue polyester base, daylight loading, 125 sheets per cartridge.
- Photothermographic technology (dry laser).
- Network connectivity. Supports printing from DICOM printing modalities.
- Dimensions and weight. 47cm x 61cm x 66cm; 54 kg.
- DR system included. Flat panel detector, Lenovo workstation with 22-inch LED monitor, Zview Console software, Multi-modality printing software, 0.5kVA UPS, Epson L130 printer, OKI Japan printer.
- 3 year warranty.

# FIXED MEDICAL INJECTORS

SinoMRI: Designed for an MRI environment, free of metal components, and compatible with gadolinium-based contrast agents.

Product

## SinoMRI (MRA Injector)

Application

MRI with contrast (MRA)

Injection capacity (ml)

50-200 ml

Maximum pressure (psi)

Up to 200 psi

Control technology

MRI-friendly interface

Compatibility with  
contrast media

Gadolineum

Patient safety

MRI compatible, metal free

Reduction of air bubbles

Advanced system

Usage environment

MRI room



- Digital display on the injection head: indicates the volume of contrast product
- LED indicators
- Mode: SinoMRI-A/AP/SinoMRI-B/BP
- Syringe: Double
- Syringe size: 65 ml sterile syringe
- Injection volume: 0.1 ml to the total capacity of the syringe
- Delay: 0 to 900 seconds
- Pause: 0 to 900 seconds
- Injection phases: 1 to 8 phases
- Injection protocol: Up to 120 protocols
- Pressure Limit: 50-300 psi in 1 psi increments
- KVO: 0.1 ml pulsed every 20 or 90 seconds (in 1 second increments, default 30 seconds)
- Flow rate: 0.1 ml/s to 10 ml/s (in 0.1 ml/s increments)
- Warranty: 2 years

[www.Surgiskart.com](http://www.Surgiskart.com)



# FIXED MEDICAL INJECTORS

**Sinopower-S:** Basic solution for contrast injections in simple CT scanners.

## Product

### Sinopower-S (Single Channel)

## Application

CT Scan (Tomodensitometry)

## Injection capacity (ml)

200-300 ml per channel

## Maximum pressure (psi)

Up to 300 psi

## Control technology

Touch screen, intuitive interface

## Compatibility with contrast media

Iodized only

## Patient safety

Pressure sensors and alarms

## Reduction of air bubbles

Integrated system

## Usage environment

CT room



- Injector with unique patented direct pressure sensor technology
- Displays real-time injection pressure function
- LCD touch screen, easy to use, move and fix
- The rotation LED indicator clearly displays the injection process
- Local and remote console available, allowing synchronous operation of the machine
- The injector will alarm and stop injection when abnormal pressure occurs, effectively reducing swelling caused by vascular rupture to protect the patient
- Over 100 drug protocols supported, allowing for more flexible injection
- Compatible with all brands of 8 or 16 slice CT scanners
- Syringe: Simple syringe
- Syringe size: 200ml sterile syringe for high pressure injector
- Pressure limit: 50-300 Psi
- Flow rate: 0.1 ml/s - 10.0 ml/s
- Step: 0.1 ml/s
- Injection volume: 0.1 ml - Syringe volume
- Injection delay: 1-600 s
- Injection phases: 1-8 phases
- Injection protocol: up to 120 protocols
- Syringe heating: 35 degrees C +/- 5 degrees C
- Syringe maintenance: 35 +/- 5 degrees C (> 1h)
- Control console: 7-inch color LCD touchscreen for local and remote use
- Large wheels and handles for easy movement and securing
- Button to immediately stop the injection in case of emergency
- Warranty: 2 years



# FIXED MEDICAL INJECTORS

**Sinopower-D: Addition of a second channel, ideal for procedures requiring two contrasts or a saline rinse**

Product	<b>Sinopower-D (Dual Channel)</b>
Application	CT Scan with double contrast
Injection capacity (ml)	200-300 ml per channel
Maximum pressure (psi)	Up to 300 psi
Control technology	Touch screen, intuitive interface
Compatibility with contrast media	Iodine and saline solution
Patient safety	Pressure sensors and alarms
Reduction of air bubbles	Integrated system
Usage environment	CT room



- Injector with unique patented direct pressure sensor technology
- Displays real-time injection pressure function
- LCD touch screen, easy to use, move and fix
- The rotation LED indicator clearly displays the injection process
- Local and remote console available, allowing synchronous operation of the machine
- The injector will alarm and stop injection when abnormal pressure occurs, effectively reducing swelling caused by vascular rupture to protect the patient
- Over 100 drug protocols supported, allowing for more flexible injection
- Compatible with all brands of 8 or 16 slice CT scanners
- Syringe: Double syringe
- Double syringe injection: Support for saline flushing
- Syringe size: 200ml sterile syringe for high pressure injector
- Pressure limit: 50-300 Psi
- Flow rate: 0.1 ml/s - 10.0 ml/s
- Step: 0.1 ml/s
- Injection volume: 0.1 ml - Syringe volume
- Injection delay: 1-600 s
- Injection phases: 1-8 phases
- Injection protocol: up to 120 protocols
- Syringe heating: 35 degrees C +/- 5 degrees C
- Syringe maintenance: 35 +/- 5 degrees C (> 1h)
- Control console: 7-inch color LCD touchscreen for local and remote use
- Large wheels and handles for easy movement and securing
- Button to immediately stop the injection in case of emergency
- Warranty: 2 years



# FIXED MEDICAL INJECTORS

SinoAngio: Optimized for angiography, with specific features for vascular applications and precise control.

Product	<b>SinoAngio (DSA Injector)</b>
Application	Angiography (DSA)
Injection capacity (ml)	50-200 ml
Maximum pressure (psi)	Up to 200 psi
Control technology	Advanced Command Interface
Compatibility with contrast media	Iodine or gadolinium-based
Patient safety	Real-time alarms and monitoring
Reduction of air bubbles	Advanced system
Usage environment	Angiography room



- Model - SinoAngio-1200 / Sino Angio-600
- 12.1-inch color touchscreen for local and remote operation (remote control is optional)
- Wide viewing angle, graphical interface
- Syringe - Single syringe
- Syringe Size - 150ml Sterile Syringe
- Injection volume - 0.1 ml to total syringe capacity
- Injection Delay - 0 to 600 seconds
- Injection phases - 1 to 8 phases
- Injection Protocol - Up to 120 protocols
- Syringe heating - 35°C ± 5°C (240 minutes)
- Tilt Lock - Tilts head down to minimize risk of air embolism
- ISI - Injection Delay and Scan Delay Synchronization
- Pressure Limit - 100-1200 Psi / 100-600 Psi
- Flow rate - 0.1 ml/s to 50.0 ml/s or 0.1 ml/s to 25.0 ml/s
- Warranty - 2 years



# X-RAY MACHINES

AMRAD 100 mA Mobile: Ideal for situations requiring high mobility, such as rural areas or emergency services.

Product	<b>AMRAD 100 mA Mobile / X-ray Machine</b>
Device type	Mobile
Main application	Mobile X-ray for emergencies or remote areas
Maximum intensity (mA)	100 mA
Generator technology	High frequency
Mobility	Very portable with wheels
User interface	LCD screen or physical controls
Image detection	Cassette or film
Usage environment	Mobile clinics, intensive care, homes



- Radiological control console
- Microcontroller based, intuitive and user friendly
- Auto power off (The collimator turns off automatically)
- X-ray tube protection through a microcontroller-based program that protects it from overloads due to exposure time.
- Powerful circuit design providing maximum accuracy for mA and kVp values (actual result)
- Two types of exposure controls (wired manual switch and touch switches on the control console)
- Audible signal during X-ray exposure
- CVT transformer and booster used in filament circuit
- AMTECH-100 M built-in protection with protective circuits, fuses and circuit breaker
- Overload indicator
- Automatic tripping in case of overload or short circuit



# X-RAY MACHINES

AMRAD 100 mA: Standard model for routine radiography, suitable for small clinics.



Product	AMRAD 100 mA / X-ray Machine
Device type	Fixed
Main application	Standard X-ray
Maximum intensity (mA)	100 mA
Generator technology	High frequency
Mobility	Fixed
User interface	Physical controls
Image detection	Cassette or film
Usage environment	Hospitals, clinics

- Radiological control console
- Microcontroller based, intuitive and user friendly
- Auto power off (The collimator turns off automatically)
- X-ray tube protection through a microcontroller-based program that protects it from overloads due to exposure time.
- Powerful circuit design providing maximum accuracy for mA and kVp values (actual result)
- Two types of exposure controls (wired manual switch and touch switches on the control console)
- Audible signal during X-ray exposure
- CVT transformer and booster used in filament circuit
- AMTECH-100 M built-in protection with protective circuits, fuses and circuit breaker
- Overload indicator
- Automatic tripping in case of overload or short circuit
- Technical characteristics of the generator
- Generator type: Single-phase, full-wave rectified (mains frequency)
- Power: 2 kW
- mA range: 25-100 mA
- kVp range: 40-100 kVp
- Exposure time: 0.1 to 6 seconds
- Display: Digital (kV, mA and mAs)
- Power supply: 230 V AC, 50 Hz ( $\pm 5\%$ )
- Focal spot: 3.5 mm
- X-ray tube type: Stationary anode/rotating anode
- Collimator: Manual Light Beam Diaphragm (LBD)
- Stand: Counterweight mobile
- Protection: Tube overload and high voltage



# X-RAY MACHINES

AMRAD 300/500 mA: Suitable for high demand environments with options for complex radiographs.

## Product

### AMRAD 300/500mA X-ray Machine

#### Device type

Fixed

#### Main application

High-throughput radiography  
for intensive applications

#### Maximum intensity (mA)

300/500 mA

#### Generator technology

High frequency

#### Mobility

Fixed

#### User interface

Advanced LCD display

#### Image detection

Cassette or film

#### Usage environment

Hospitals, advanced  
radiology



- Radiological control console
- Microcontroller based, easy to use and user friendly
- Auto power off (the collimator turns off automatically)
- Microcontroller based program protecting X-ray tube life from overloads due to exposure time
- Powerful circuit design providing maximum mA and kVp accuracy (real result)
- Two types of exposure switches (wired manual switch and touch switches on the control console)
- Sound signal at the time of X-ray exposure
- CVT transformer and booster used in filament circuit
- AMTECH-300/500 is protected by its integrated protection circuits, fuses and circuit breaker
- Overload indicator
- Electronic overload protection with simultaneous high voltage, kVp, mA and time protection. Canon E7239X Rotating Anode X-ray Tube / Imported
- Automatic tripping in case of overload or short circuit



# X-RAY MACHINES

AMRAD 300/500 mA: Suitable for high demand environments with options for complex radiographs.

## Product

### AMRAD(15-80) Eco Digital Radiography

#### Device type

Fixed digital

#### Main application

Digital radiography with dose reduction

#### Maximum intensity (mA)

15-80 mA

#### Generator technology

High digital frequency

#### Mobility

Fixed with an adjustable mechanical arm

#### User interface

Intuitive digital interface

#### Image detection

Digital Flat Panel Detector (DR)

#### Usage environment

Hospitals and advanced radiology centers



# ULTRASOUND PROBES



**Linear**

Superficial examinations (skin, muscles, blood vessels near the surface)



**Convex**

Abdominal (liver, kidneys, bladder), obstetric and gynecological examinations



**Cardiac**

Echocardiography (study of the heart)



**Micro convex**

Small body parts (thyroid, testicles, joints)



**TVS (Transvaginal)**

Detailed gynecological examinations, early pregnancy monitoring



**Volume**

3D and 4D examinations, particularly in obstetrics



**Transrectal**

Male Prostate, Rectal, and Pelvic Exams



# C-ARM MACHINES

## Adonis AE-60HFS/ AE HF 9060 RA



- Arm Unit: An advanced X-ray system, ideal for surgical procedures, providing clear and precise images thanks to a latest generation generator and simplified positioning.
- Wide Uses: Perfect for urologists, orthopedic surgeons, cardiologists, interventional radiologists, neurologists and gastroenterologists.
- Quality and precision: Dimensional precision, careful design, high resistance.
- Compact Imager: Ultra-compact image intensifier with CCD camera (9 inches).
- Exceptional Resolution: Excellent spatial resolution with 0.3mm and 0.6mm focal points.
- Safety: Sleep mode to prevent accidental radiation emissions during transportation.
- Display flexibility: Image rotation for optimal viewing, regardless of the position of the organ.
- X-ray tube: Stationary anode OR 5.0 kW rotating anode tube.
- Warranty: 1 year.



# DENTAL MACHINES

## EPSILON EP DENTO

- EP DENTO is a world-class product capable of meeting the demands of the busiest imaging environments.
- Ideal for hospitals, emergency departments, imaging centers and high-volume outpatient care facilities.
- Generator: Two-pulse generator, full-wave rectification.
- Console: Microcontroller, touch panel, 20x4 LCD display (146x63mm).
- APR Function: Available.
- X-ray tube: OPX-105 (CEI or KL brands) or Wanray.
- Tube current: 10 mA.
- Tube voltage: 55 kVp to 90 kVp (in 1 kVp steps).
- Focal point: 0.4 mm<sup>2</sup>, fine focus.
- Total filtration: 2.5 mm aluminum.
- Exposure time: PAN: 17 seconds, ATM: 4x4 seconds, CEPH: 60 mAs.
- Patient positioning: Laser marking, chin rest with bite rod.



- Remote Control: Lightweight, easy to use for exposure, testing, resetting and light centering.
- Cassettes: OPG and ATM format: 6x12" and 10x12", Ceph: 8x10" and 10x12".
- Cassette Type: Flat (Analog/Digital).
- Safety: Automatic exposure stop, automatic audible and visual alarm.
- Cephalometry: AP/PA/LAT view.
- Magnification: OPG - 1.2, CEPH - 1.1.
- Voltage regulation: Two-stage CVT regulation.
- Power supply: 100/220/240 VAC with 15 Amp socket.
- Maximum power: 900 Watts.
- Dimensions: With cephalometer: 230x175x95 cm, without cephalometer: 230x80x95 cm.
- Weight: 200 kg (approx.).
- Column height: Adjustable from 173 cm to 234 cm.



# MAMMOGRAPHY MACHINES

Product	Navigator DR CARE
Type of technology	Digital mammography
Benefits	<ul style="list-style-type: none"><li>- High image resolution for accurate diagnosis.</li><li>- Easy integration with PACS systems.</li><li>- Low radiation dose for patient safety.</li></ul>
Areas of application	<ul style="list-style-type: none"><li>- Early detection of breast cancer.</li><li>- Monitoring of high-risk patients.</li></ul>



- Detector: Equipped with an amorphous silicon-based detector measuring 24x30 cm.
- Stability: Works stably in most environments.
- Image Quality: Amorphous silicon flat panel detector provides high image resolution.
- X-ray Tube: High-end IAE X-ray tube with a molybdenum/tungsten target.
- Flexibility: C-arm pivots 135° to 180°, allowing for quick and efficient patient positioning.
- Patient Comfort: Multi-level flexible compression for increased patient comfort and safety.
- Design: Stand-alone and elegant design.
- Radiation dose: High image quality with reduced radiation dose.
- Robustness: Suitable for all environments, even the most difficult.
- Certifications: CE and ISO certified.
- Warranty: 2 years.



# MAMMOGRAPHY MACHINES

Product

## Navigator Platinum

Type of technology

Analogue mammography

Benefits

- Cheaper to purchase and maintain.
- Simple and robust system, suitable for environments with limited resources.
- Easier maintenance with readily available parts.

Areas of application

- Basic screening and diagnosis in clinical environments.
- Used in rural clinics or centers with limited budgets.



- Analog mammography system using 18x24 cm and 24x30 cm films.
- Adaptability: Fits almost all breast sizes with its two film formats.
- High Quality X-ray Tube: Equipped with high-end X-ray tube with molybdenum/tungsten target.
- Flexibility: The articulated C-arm allows the patient to be easily positioned at different angles.
- Patient comfort: The multi-level compression system ensures optimal patient comfort.
- Elegant Design: The stand-alone design gives the device a more aesthetic look.
- Image quality: High image quality is achieved through low radiation dose level.
- Scalability: Ability to easily upgrade to digital mammography by replacing cassettes with imaging plates.
- Economy: An economical option for customers on a budget.
- Certifications: Complies with CE and ISO standards.
- Warranty: 2 years.



# MAMMOGRAPHY MACHINES

Product	Navigator 3000A
Type of technology	Digital mammography
Benefits	<ul style="list-style-type: none"><li>- Intuitive software for image processing and analysis.</li><li>- Advanced digital image processing capability.</li><li>- High-quality imaging for routine and advanced examinations.</li></ul>
Areas of application	<ul style="list-style-type: none"><li>- Diagnostic examination and screening of breast cancer with high precision.</li><li>- Ideal for hospitals and clinics with a high flow of patients.</li></ul>



- Premium Digital Mammography Model: This model offers superior performance compared to the Navigator DR Care model.
- Improved image resolution: Thanks to high-performance components, this model ensures exceptional image quality.
- 3D Potential: Although this is a 2D model, it can be updated to support 3D tomosynthesis.
- Elegant design: The sleek and modern design of the device makes it particularly aesthetic.
- Flexible exposure modes: 2D, 3D and combined 2D+3D modes can significantly reduce radiation dose.
- Advanced Image Processing: Pseudo-color image processing facilitates the detection of microcalcifications and suspicious tissues.
- Easy to use: The device is simple and intuitive to use.
- Robustness: Designed to operate in all environments, even the most difficult.
- Compliance: CE and ISO certified, ensuring quality and safety.
- Warranty: 2 years warranty.





Your One-Stop Shop for Surgical Supplies

# Innovative Medical Equipment at Unbeatable Prices

Take advantage of it now:

- ✓ Exclusive Offers
- ✓ Innovative Solutions
- ✓ Quality Guaranteed
- ✓ Dedicated Support

Discover our complete online catalog to benefit from it!

WhatsApp number  +91 72042 86493



[www.surgicalskart.com](http://www.surgicalskart.com)

GET  
DISCOUNTS

